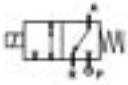


## 3/2 WAY DIRECT ACTING SOLENOID VALVE, G 1/8"



normally closed

TYPE: B397

### TECHNICAL SPECIFICATIONS

|                      |  |
|----------------------|--|
| Media:               | water, oil, air                                |
| Media temperature:   | -10°C ÷ +130°C                                 |
| Ambient temperature: | -10°C ÷ +50°C                                  |
| Body material:       | brass (CW719R EN 12165) low lead content       |
| Orifice material:    | stainless steel (AISI 303 EN 10088-3)          |
| Operator material:   | stainless steel                                |
| Seal material:       | foodgrade FKM A80                              |
| Coil power:          | AC 10VA (holding)<br>AC 16VA (inrush)<br>DC 7W |
| Protection class:    | IP 65 (with connector)                         |

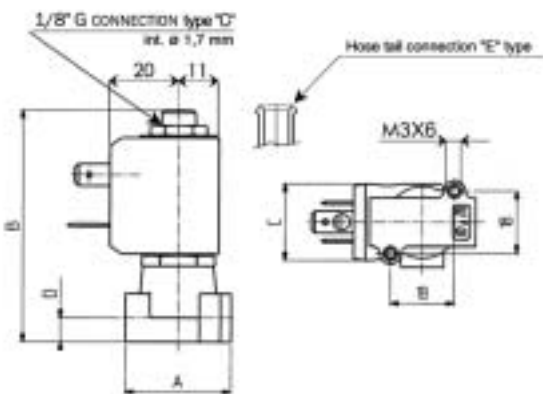


### OPTIONS

|  |
|--|
| Normally open (Ex. code RB397CVE)                            |
| Manual override (Ex. code B397CVBM)                          |
| EPDM seal for air and hot water MAX 120°C (Ex. code B397CEC) |
| Armature tube with hose tail Ø 6 mm (Ex. code B397EVE)       |
| Electroless nickel plating treatment (Ex. code B397CVCK)     |

### SELECTION TABLE

| VALVE   | G connection | Nominal Diameter | Flow rate kvs | OPD   |          |          | COILS |                       |
|---------|--------------|------------------|---------------|-------|----------|----------|-------|-----------------------|
|         |              |                  |               | min   | max      |          | Code  | [Volts/Hz]            |
| Code    | [ISO 228]    | [mm]             | [l/min]       | [bar] | AC [bar] | DC [bar] | Code  | [Volts/Hz]            |
| B397CVA | 1/8"         | 1.0              | 0.5           | 0     | 18       | 18       | 2250  | 24V DC                |
| B397CVB | 1/8"         | 1.2              | 0.7           | 0     | 15       | 15       | 2200  | 24V 50/60Hz           |
| B397CVC | 1/8"         | 1.5              | 1.0           | 0     | 10       | 10       | 2400  | 110V 50Hz - 120V 60Hz |
| B397CVE | 1/8"         | 2.0              | 1.9           | 0     | 5        | 5        | 2600  | 200V 50Hz - 220V 60Hz |
| B397CVH | 1/8"         | 3.0              | 3.5           | 0     | 2        | 2        | 2700  | 230V 50Hz - 240V 60Hz |



### DIMENSIONS & WEIGHTS

| G connection | A    | B    | C    | D    | weight |
|--------------|------|------|------|------|--------|
| [ISO 228]    | [mm] | [mm] | [mm] | [mm] | [Kg]   |
| 1/8"         | 30   | 67   | 22   | 7    | 0.15   |
|              |      |      |      |      |        |
|              |      |      |      |      |        |