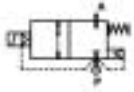


2/2 WAY PILOT OPERATED VALVE WITH ASSISTED LIFT, G 1/4" ÷ G 1/2"



normally closed

TYPE: D884/885/886

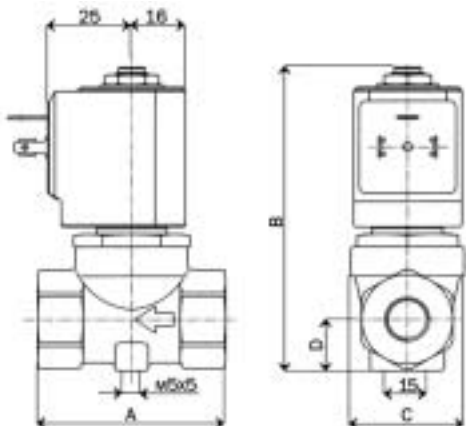
TECHNICAL SPECIFICATIONS

Media:	water, oil, air
Media temperature:	-10°C ÷ +130°C
Ambient temperature:	-10°C ÷ +50°C
Body material:	brass (CW617N EN 12165)
Operator material:	stainless steel
Operator seal material:	FKM
Seal and Diaphragm material:	FKM
Coil power:	AC 18VA (holding) AC 36VA (inrush) DC 14W
Protection class:	IP 65 (with connector)



SELECTION TABLE

VALVE	G connection	Nominal Diameter	Flow rate kvs	OPD			COILS	
				min	max		Code	[Volts/Hz]
Code	[ISO 228]	[mm]	[l/min]	[bar]	AC [bar]	DC [bar]		
D884DVU	1/4"	10.5	21	0	16	6	7250	24V DC
D885DVU	3/8"	10.5	24	0	16	6	7200	24V 50/60Hz
D886DVU	1/2"	10.5	25	0	16	6	7400	110V 50Hz - 120V 60Hz
							7600	200V 50Hz - 220V 60Hz
							7700	230V 50Hz - 240V 60Hz



DIMENSIONS & WEIGHTS

G connection	A	B	C	D	weight
[ISO 228]	[mm]	[mm]	[mm]	[mm]	[Kg]
1/4"	54	89	34	15.5	0.4
3/8"	54	89	34	15.5	0.4
1/2"	54	89	34	15.5	0.4